

Monday	Tuesday	Wednesday	Thursday	Friday
1 Dr. Day Care is closed to observe Labor Day – enjoy!	2 Using 2 different art materials to explore the process of making art (C, M, CA) *	3 Using visuals and sign language to help establish routines, rituals and expectations for our classroom (SE)	4 Singing our song of the month, <i>Dr. Day Care Is My School</i> -see the back for lyrics (LD, S)	5 Celebrating our grandparents by having tea with a special person (SS, SE)
<i>Ask Your Child/Car Chatter:</i> Sing the song of the month to your baby while changing diapers (see the back)				
8 Reading a book by the spotlighted authors of the month, Audrey and Don Wood – see the back for suggestions (L)	8 Greeting our friends and family members at arrival and departure times in different ways (SE, LD)	10 F is for Family- bring in a family photo and add to our classroom family tree (SS, SE, SS)	11 Play a circle time game by taking 1 deep breath, 1 peek-a-boo, 1 giggle (M, SE)	12 Celebrating the color of the month, yellow = amarillo. Wear something yellow today and paint a sun (S, CA)*
<i>Ask Your Child/Car Chatter:</i> Look through family photos and talk about who each person is				
15 Connecting with families as we ask them a morning question to encourage conversations (LD, CD)	16 Look in a mirror to notice and talk about our individual facial features (PH, SE)	17 Exploring different shades of yellow by mixing paint it in a baggie and making circles (S, M, CA) *	18 Implementing helping jobs to encourage independence and helpfulness (SS, SE)	19 Practice the apple tree yoga pose to celebrate the beginning of fall (PH,)
<i>Ask Your Child/Car Chatter:</i> How many yellow objects can you find in your home?				
22 Happy first day of fall! While outdoors, gather nature items to make a fall collage (S, CA, LD)	23 Signing and saying the words of the month in Spanish: school = escuela and question = pregunta (LD)	24 S is for school family – singing the <i>This is My School Family</i> song (PH, SE, LD)	25 Creating an art activity inspired by our authors of the month, Audrey and Don Wood (CA, L) *	26 F is for painting with Feathers to create a class mural (PD, CA)
<i>Ask Your Child/Car Chatter:</i> Read a book with your baby by the authors of the month, Don and Audrey Wood (see the back for suggestions)				
29 Singing fingerplays to work on relationship building and connections with others (LD, SE)	30 S is for sensory words: soft, squishy, and slimy while exploring fun textures (S, LD)			
<i>Ask Your Child/Car Chatter:</i> Sing a favorite song with your baby while looking at them and making connections for attachment				

"Ask Your Child/Car Chatter"

Use these questions or suggestions to help your child make connections from school to home by talking about what was learned in school, connecting play to school concepts, and more!

Rhode Island Early Learning & Development Standards (RIELDS) Domains:

(Denotes calendar activities that are aligned with the RIELDS)

CA – Creative Arts
CD – Cognitive Development
PH – Physical Health and Motor Development
L – Literacy
LD – Language Development
M – Mathematics
S – Science
SE – Social and Emotional Development
SS – Social Studies

Early Learning standards articulate shared expectations for what young children should know and be able to do. They provide a common language for measuring progress towards specific learning goals.



Curriculum Calendar

*denotes take home project that will be placed in your child's mailbox

Concepts of the Month

Creative Curriculum Study: Beginning of the Year

Visit our website to see videos of our Curriculum Concepts! 

Monthly Topic:

(related to Creative Curriculum Study)

My School Family

Color: yellow = amarillo

Shape: circle = circulo

Numbers: 1 & 2

Letters: F & S

Spanish Words: school = escuela question = pregunta

Author/Illustrator Spotlight: Audrey & Donald Wood

Suggested books to read together:

Piggies

The Little Mouse

Quiet as a Cricket

The Napping House

Silly Sally

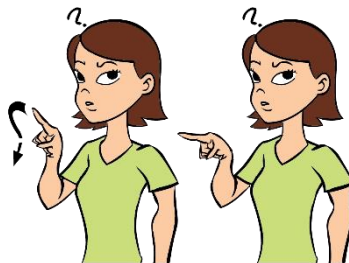
The Red Ripe Strawberry and the Big Hungry Bear

Sign Language:

School



Question



Song of the Month:

Dr. Day Care Is My School

Sung to the tune of "Oh my Darling Clementine"

Dr. Day Care

Dr. Day Care

Dr. Day Care is my school.

Every day we learn and play

Dr. Day Care is my school.

We are safe, we are kind

We are all responsible

I am smarter than I was yesterday

Dr. Day Care is my school.

Math and Measuring: One-to-one correspondence

One-to-one correspondence is an important number relationships and operations math skill that involves counting each object in a set once, and only once with a touch on each object. This begins early on when young children drop one object at a time into a container and grows to older children comparing small sets of similar objects.

Yoga Pose:

Apple tree



Spotlight on:

Social Emotional



Social and emotional development encompasses young children's evolving capacity to form close and positive adult and peer relationships and express a full range of emotions in socially and culturally appropriate ways. These skills are essential for lifelong learning. Healthy social and emotional development benefits from consistent, positive interactions with educators, parents/primary caregivers, and other familiar adults who appreciate each child's individual temperament.