

September 2025

Preschool

<i>Monday</i>	<i>Tuesday</i>	<i>Wednesday</i>	<i>Thursday</i>	<i>Friday</i>
1 Dr. Day Care is closed to observe Labor Day – enjoy!	2 Choosing between 2 different art materials to create 2 process art projects with a partner to take home (CD, M, CA) *	3 Creating visuals to help establish routines, rituals and expectations for our classroom (SE)	4 Singing our song of the month, <i>Dr. Day Care Is My School</i> -see the back for lyrics (LD, S)	5 Celebrating our grandparents by having tea with a special person (SS, SE)
<i>Ask Your Child/Car Chatter:</i> Sing the song of the month with your child to and from Dr. Day Care (see the back)				
8 Reading a book by the spotlighted authors of the month, Audrey and Don Wood – see the back for suggestions (L)	8 Greeting our friends and family members at arrival and departure times in different ways and charting what we chose (SE, LD)	10 F is for family- bring in a family photo for show-and-tell, add to family tree and draw our family (SS, SE, CA)	11 At circle time, practice one-to-one correspondence by gathering items from the classroom and place 1 of each into a big mixed (toy) salad (M, CD, LD)	12 Celebrating the color of the month, yellow = amarillo. Wear something yellow today and paint a sunflower at the easel (S, CA) *
<i>Ask Your Child/Car Chatter:</i> Discuss and practice different ways to greet family members and friends				
15 Implementing our routine of a morning question of the day to spark curiosity and encourage conversations (LD, CD)	16 Create a self-portrait to notice and talk about our individual facial features (PH, CA)	17 Exploring different shades of yellow by mixing yellow with different colors and printing circles (S, M, CA)*	18 Establishing and practicing class jobs to encourage independence and helpfulness (SS, SE)	19 Practice the apple tree yoga pose to celebrate the beginning of the fall season (PH)
<i>Ask Your Child/Car Chatter:</i> Implement a job that your child can be responsible for at home				
22 Going outdoors to gather nature items to make a fall collage to celebrate the first day of fall (S, CA, LD)	23 Signing and saying the words of the month in Spanish: school = escuela and question = pregunta (LD)	24 S is for school family – singing and signing the <i>This is My School Family</i> song while acting out the movements with a partner (PH, SE, LD)	25 Creating an art activity inspired by our authors of the month, Audrey and Don Wood (CA, L) *	26 F is for painting with forks, feathers and finger-painting to create a fall class mural (PD, CA)
<i>Ask Your Child/Car Chatter:</i> Choose a book by the authors of the month to read at bedtime (see the back for suggestions)				
29 Practice callbacks during a transition time of going outside to work on attention-getting and teaching as a class job (LD, SE)	30 S is for sensory words: sticky, squishy, and slimy to explore and describe fun textures (S, LD)			
<i>Ask Your Child/Car Chatter:</i> Have fun using new vocabulary words to describe food items				

"Ask Your Child/Car Chatter"

Use these questions or suggestions to help your child make connections from school to home by talking about what was learned in school, connecting play to school concepts, and more!

Rhode Island Early Learning & Development Standards (RIELDS) Domains:

(Denotes calendar activities that are aligned with the RIELDS)

CA – Creative Arts
 CD – Cognitive Development
 PH – Physical Health and Motor Development
 L – Literacy
 LD – Language Development
 M – Mathematics
 S – Science
 SE – Social and Emotional Development
 SS – Social Studies

Early Learning standards articulate shared expectations for what young children should know and be able to do. They provide a common language for measuring progress towards specific learning goals.



Curriculum Calendar

*denotes take home project that will be placed in your child's mailbox

Concepts of the Month

Creative Curriculum Study: Beginning of the Year

Visit our website to see videos of our Curriculum Concepts! 

Monthly Topic:

(related to Creative Curriculum Study)

My School Family

Color: yellow = amarillo

Shape: circle = circulo

Numbers: 1 & 2

Letters: F & S

Spanish Words: school = escuela question = pregunta

Author/Illustrator Spotlight: Audrey & Donald Wood

Suggested books to read together:

Piggies

The Little Mouse

Quiet as a Cricket

The Napping House

Silly Sally

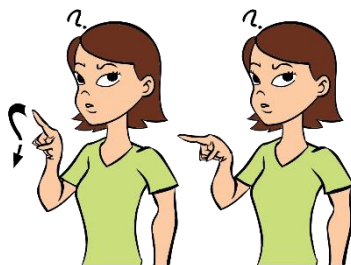
The Red Ripe Strawberry and the Big Hungry Bear

Sign Language:

School



Question



Song of the Month:

Dr. Day Care Is My School

Sung to the tune of "Oh my Darling Clementine"

Dr. Day Care

Dr. Day Care

Dr. Day Care is my school.

Every day we learn and play

Dr. Day Care is my school.

We are safe, we are kind

We are all responsible

I am smarter than I was yesterday

Dr. Day Care is my school.

Math and Measuring: One-to-one correspondence

One-to-one correspondence is an important number relationships and operations math skill that involves counting each object in a set once, and only once with a touch on each object. This begins early on when young children drop one object at a time into a container and grows to older children comparing small sets of similar objects.

Yoga Pose:

Apple tree



Spotlight on:

Social Emotional



Social and emotional development encompasses young children's evolving capacity to form close and positive adult and peer relationships and express a full range of emotions in socially and culturally appropriate ways. These skills are essential for lifelong learning. Healthy social and emotional development benefits from consistent, positive interactions with educators, parents/primary caregivers, and other familiar adults who appreciate each child's individual temperament.