

<i>Monday</i>	<i>Tuesday</i>	<i>Wednesday</i>	<i>Thursday</i>	<i>Friday</i>
<b>1</b> Dr. Day Care is closed to observe Labor Day – enjoy!	<b>2</b> Choosing between 2 different art materials to make a process-art project to explore creativity (C, M, CA) *	<b>3</b> Creating visuals to help establish routines, rituals and expectations for our classroom (SE)	<b>4</b> Singing our song of the month, <i>Dr. Day Care Is My School</i> -see the back for lyrics (LD, S)	<b>5</b> Celebrating our grandparents by having tea with a special person (SS, SE)
<i>Ask Your Child/Car Chatter:</i> Sing the song of the month with your child while traveling to and from Dr. Day Care (see the back)				
<b>8</b> Reading a book by the spotlighted authors of the month, Audrey and Don Wood – see the back for suggestions (L)	<b>8</b> Greeting our friends and family member at arrival and departure times in different ways and with various options (SE, LD)	<b>10</b> F is for family- bring in a family photo for show-and-tell and add to family tree (SS, SE)	<b>11</b> At circle time, practice one-to-one correspondence by gathering classroom items and putting 1 of each into a big mixed (toy) salad (M, C, LD)	<b>12</b> Celebrating the color of the month, yellow = amarillo. Wear something yellow today and paint a sun (S) *
<i>Ask Your Child/Car Chatter:</i> Practice the math concept of 1-1 correspondence with objects in your home				
<b>15</b> Implementing a morning question of the day to spark curiosity and encourage conversations (LD, CD)	<b>16</b> Create a self-portrait to notice and discuss our individual facial features (PH, CA)	<b>17</b> Exploring different shades of yellow by mixing yellow with different colors and printing circles (S, M, CA) *	<b>18</b> Establishing and assigning class jobs to encourage independence and helpfulness (SS, SE)	<b>19</b> Practice the apple tree yoga pose to stretch our muscles and celebrate the beginning of the fall season (PH, CD)
<i>Ask Your Child/Car Chatter:</i> Discuss the difference between your facial features and your child's				
<b>22</b> Going outdoors to gather nature items to make a fall collage to celebrate the first day of fall (S, CA, LD)	<b>23</b> Signing and saying the words of the month in Spanish: school = escuela and question = pregunta – see the back (LD)	<b>24</b> S is for school family – singing the <i>This is My School Family</i> song while acting out the movements with a partner (PH, SE, LD)	<b>25</b> Creating an art activity inspired by our authors of the month, Audrey and Don Wood (CA, L) *	<b>26</b> F is for painting with feathers to create a fall class mural (PD, CA)
<i>Ask Your Child/Car Chatter:</i> Cuddle up with a book by the authors of the month (see the back for suggestions) at bedtime				
<b>29</b> Practice callbacks during a transition time of going outside to work on the skill of attention (LD, SE)	<b>30</b> S is for sensory words: sticky, squishy, and slimy while exploring fun textures (S, LD)			
<i>Ask Your Child/Car Chatter:</i> Work with your child on vocabulary building as they describe their food at dinner time				

## "Ask Your Child/Car Chatter"

Use these questions or suggestions to help your child make connections from school to home by talking about what was learned in school, connecting play to school concepts, and more!

## Rhode Island Early Learning & Development Standards (RIELDS) Domains:

(Denotes calendar activities that are aligned with the RIELDS)

CA – Creative Arts  
CD – Cognitive Development  
PH – Physical Health and Motor Development  
L – Literacy  
LD – Language Development  
M – Mathematics  
S – Science  
SE – Social and Emotional Development  
SS – Social Studies

Early Learning standards articulate shared expectations for what young children should know and be able to do. They provide a common language for measuring progress towards specific learning goals.



# Curriculum Calendar

\*denotes take home project that will be placed in your child's mailbox

# Concepts of the Month

**Creative Curriculum Study:** Beginning of the Year

Visit our website to see videos of our Curriculum Concepts! 

**Monthly Topic:**

(related to Creative Curriculum Study)

**My School Family**

**Color:** yellow = amarillo

**Shape:** circle = circulo

**Numbers:** 1 & 2

**Letters:** F & S

**Spanish Words:** school = escuela      question = pregunta

**Author/Illustrator Spotlight:** Audrey & Donald Wood

Suggested books to read together:

*Piggies*

*The Little Mouse*

*Quiet as a Cricket*

*The Napping House*

*Silly Sally*

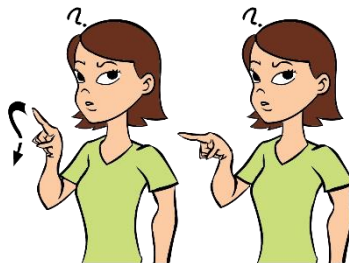
*The Red Ripe Strawberry and the Big Hungry Bear*

**Sign Language:**

School



Question



**Song of the Month:**

**Dr. Day Care Is My School**

Sung to the tune of "Oh my Darling Clementine"

Dr. Day Care

Dr. Day Care

Dr. Day Care is my school.

Every day we learn and play

Dr. Day Care is my school.

We are safe, we are kind

We are all responsible

I am smarter than I was yesterday

Dr. Day Care is my school.

**Math and Measuring:** One-to-one correspondence

One-to-one correspondence is an important number relationships and operations math skill that involves counting each object in a set once, and only once with a touch on each object. This begins early on when young children drop one object at a time into a container and grows to older children comparing small sets of similar objects.

**Yoga Pose:**

Apple tree



**Spotlight on:**

**Social Emotional**

Social and emotional development encompasses young children's evolving capacity to form close and positive adult and peer relationships and express a full range of emotions in socially and culturally appropriate ways. These skills are essential for lifelong learning. Healthy social and emotional development benefits from consistent, positive interactions with educators, parents/primary caregivers, and other familiar adults who appreciate each child's individual temperament.

